

# Weekly Market Summary

Published by:  
**Missouri Department of Agriculture**  
**Ag Business Development Division**  
**Market News Program**



Chris Chinn, Director  
 Davin Althoff, Division Director  
 Tony Hancock, Editor  
 agmarketnews.mo.gov  
<http://www.ams.usda.gov/marketnews.htm>

Michael L. Parson, Governor

Volume XLI, Number 46 ♦ P.O. Box 630, Jefferson City, MO 65102 ♦ (573) 751-4211 ♦ Monday, Nov 29, 2021

## MISSOURI WEEKLY FEEDER CATTLE WEIGHTED AVERAGE REPORT

Receipts: 26,790 Week ago: 28,354 Year ago: 24,300  
 Steers and Heifers Medium and Large 1—Weighted average weights and prices

### STEERS: Medium and Large 1

282 lbs. 197.89	475 lbs. 191.60	675 lbs. 163.26	868 lbs. 161.52
333 lbs. 189.73	529 lbs. 187.67	719 lbs. 162.38	923 lbs. 158.26
380 lbs. 205.17	574 lbs. 174.89	777 lbs. 162.84	952 lbs. 151.00
429 lbs. 200.62	622 lbs. 166.77	822 lbs. 162.18	

### HEIFERS: Medium and Large 1

320 lbs. 163.47	524 lbs. 155.31	724 lbs. 154.10	901 lbs. 145.00
382 lbs. 165.12	574 lbs. 149.42	780 lbs. 150.01	1005 lbs. 134.00
427 lbs. 163.72	620 lbs. 150.24	821 lbs. 149.66	
476 lbs. 158.73	674 lbs. 153.05	873 lbs. 142.76	

### Missouri Stocker Formula for 11/29/2021

Monday's Missouri Stocker Formula consists of **4009** head with a weighted average weight of **546.89** lbs. and a price value of **173.47**, 9.00 higher than last Monday.

This a rolling seven day calculated weighted value which combines all Feeder Steers reported by MDA/USDA Market News Service weighing from 400-649 lbs. in the Medium and Large 1 and Medium and Large 1-2 frame and muscle classifications, including all comment cattle except Brahman X.

### SOUTH CENTRAL MISSOURI WEEKLY SUMMARY

(West Plains, Ava)

Receipts: 2031 Week ago: 5932 Year Ago: 2968

Compared to last week, steer and heifer calves 2.00 to 4.00 higher, spots 8.00 higher, with most weights not well tested. Slaughter cows 2.00 lower. Slaughter bulls 1.00 lower.

#### STEERS:

Medium and Large 1

300-400 lbs.	183.00-200.00
400-500 lbs.	175.00-184.00
500-600 lbs.	164.50-179.00
600-700 lbs.	152.00-165.00
700-800 lbs.	155.50-169.00

#### HEIFERS:

Medium and Large 1

400-500 lbs.	147.00-160.00
500-600 lbs.	140.00-153.00
600-700 lbs.	140.00-146.00

#### Holsteins

Large 3

Scarce

#### SLAUGHTER COWS:

Breaking and Boning (70-85% lean) 48.00-57.00, high dressing 56.00-64.00, few low dressing 43.00-47.00. Lean (85-90%) 40.00-49.00

Scarce

#### SLAUGHTER BULLS:

Yield Grade 1-2 1050-2000 lbs. 72.50-88.00; high dressing 91.00-100.00; low dressing 55.00-68.00

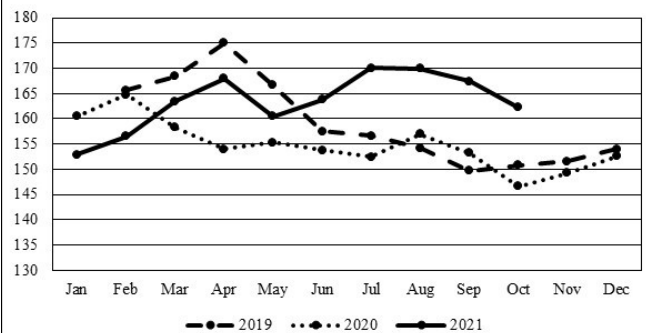
COW & CALF PAIRS: Scarce

REPLACEMENT COWS: Medium and Large 2 2-8 yrs 990-1590 lbs 2nd to 3rd stage 600.00-1100.00, 1st stage 725.00-875.00 per head

BRED HEIFERS: Medium and Large 1-2 yearlings 790-920 lbs 600.00-875.00 per head

The Weekly Market Summary, as well as historical summaries, are available on our website <https://agmarketnews.mo.gov/summaries>  
 Market News Hotline: 1-573-522-9244

### Missouri Stocker Formula



\*Graph is updated the first Monday of each month.

### SOUTHWEST MISSOURI WEEKLY SUMMARY

(Joplin and Springfield)

Receipts: 14,658 Week Ago: 11,906 Year ago: 13,307

Compared to last week, steers 3.00 to 7.00 higher, heifers 3.00 to 5.00 higher. Slaughter cows steady to 4.00 lower. Slaughter bulls 1.00 to 5.00 lower.

#### STEERS:

Medium and Large 1

300-400 lbs.	173.00-211.00
400-500 lbs.	171.00-191.00
500-600 lbs.	159.00-181.00
600-700 lbs.	151.00-173.00
700-800 lbs.	156.00-171.00
800-900 lbs.	155.00-169.00
900-1000 lbs.	151.00-162.00
38 hd 1007 lbs.	143.00

#### HEIFERS:

Medium and Large 1

300-400 lbs.	157.00-172.00
400-500 lbs.	141.00-162.00
500-600 lbs.	135.00-156.00
600-700 lbs.	136.00-155.00
700-800 lbs.	144.00-157.75
800-900 lbs.	136.00-155.00
125 hd 901 lbs.	145.00
12 hd 1005 lbs.	134.00

#### HOLSTEINS:

Large 3

300-350 lbs.	91.00-100.00
--------------	--------------

SLAUGHTER COWS: Breaking and Boning (70-85% lean) 46.50-63.50, high dressing 59.00-69.00; low dressing 40.00-54.00. Lean (85-90%) 40.00-51.00

SLAUGHTER BULLS: Yield Grade 1-2 1225-2190 lbs 77.00-90.00; high dressing 86.00-95.50; low dressing 62.00-79.00

REPLACEMENT COWS: Medium and Large 1-2 2-8 yrs 1055-1460 lbs 2nd to 3rd stage 700.00-1100.00 per head

COW & CALF PAIRS: Medium and Large 1 2-8 yrs 1250-1600 lbs baby to 300 lbs calves few bred back 1525.00-1800.00; pkg 2400.00 per pair.

**WEST CENTRAL MISSOURI WEEKLY SUMMARY**

(Kingsville, Windsor, Butler)

Receipts: 1020 Week ago: 5663 Year ago: 1228

Compared to last week, a light test of feeders traded steady. Slaughter cows steady. Slaughter bulls 2.00 to 3.00 lower.

**FEEDER STEERS:**

Medium and Large 1

Pkg 425 lbs.	186.00
500-600 lbs.	168.00-178.00
600-700 lbs.	148.00-167.00
700-800 lbs.	148.00-161.00
800-900 lbs.	139.00-143.00

**FEEDER HEIFERS:**

Medium and Large 1

400-500 lbs.	154.00-164.50
500-600 lbs.	138.00-151.00
16 hd 723 lbs.	147.00
950-1000 lbs.	125.00-126.50

**SLAUGHTER BULLS:** Yield  
Grade 1-2 1230-2100 lbs 76.00-86.50; high dressing few 87.50-92.00; low dressing 65.00-77.00

**SLAUGHTER COWS:** Breaking and Boning (70-85% lean) 49.50-60.00, high dressing 53.50-67.00, low dressing 44.00-54.50. Lean (85-90%) 41.00-47.50

**REPLACEMENT COWS:** Medium and Large 1-2 5-8 yrs 1273-1490 lbs 2nd to 3rd stage 950.00-1200.00 per head

**COW & CALF PAIRS:** Scarce

**NORTHEAST MISSOURI WEEKLY SUMMARY**

(Bowling Green, Kingdom City, Palmyra)

Receipts: 3513 Week ago: 3634 Year ago: 3370

Compared to last week, steers under 650 lbs mostly steady to 5.00 higher, over 650 lbs firm undertone on light test. Heifers steady to firm. Slaughter cows steady to 3.00 lower.

**FEEDER STEERS:**

Medium and Large 1

400-500 lbs.	180.00-194.00
500-600 lbs.	160.00-177.00
600-700 lbs.	155.00-165.50
700-800 lbs.	159.00-163.50
800-900 lbs.	159.00-164.50
58 hd 950 lbs.	151.00

**FEEDER HEIFERS:**

Medium and Large 1

400-500 lbs.	150.25-168.00
500-600 lbs.	145.00-152.00
600-700 lbs.	152.75-156.25
700-750 lbs.	149.00-150.0

**SLAUGHTER BULLS:** Yield  
Grade 1-2 1350-2130 lbs 83.00-93.00; low dressing 72.00-79.00

**SLAUGHTER COWS:** Breaking and Boning, (70-85% lean) 53.50-65.00; high dressing 60.00-74.50; low dressing 47.50-56.00. Lean (85-90%) 50.00-55.00

**SLAUGHTER STEERS:** Choice 2-3 132.50-137.00. Select and Choice 2-3 125.50-132.00

**BRED COWS:** Medium and Large 1 2-8 yrs 1328-1550 lbs 2nd stage 1725.00-1950.00, 1st stage 1525.00; 5-8 yrs 1141-1363 lbs 2nd stage 1475.00-1550.00. Medium and Large 1-2 2-8 yrs 1240-1372 lbs 2nd stage 1575.00-1600.00 per head

**SLAUGHTER HEIFERS:** Choice 2-3 132.00-137.00. Select and Choice 2-3 129.00-131.00. Select 1-2 119.00-123.00

**NORTH CENTRAL MISSOURI WEEKLY SUMMARY**

(Macon, Unionville, Green City, New Cambria)

Receipts: 9430 Week ago: 2206 Year ago: 7696

No adequate comparison due to Thanksgiving special sales. Feeders traded with a sharply higher undertone. Slaughter cows mostly steady.

**FEEDER STEERS:**

Medium and Large 1

400-500 lbs.	181.00-223.00
500-600 lbs.	168.00-206.00
600-700 lbs.	163.50-179.00
700-800 lbs.	163.50-170.75
800-900 lbs.	160.50-170.60
900-950 lbs.	159.00-164.50

**FEEDER HEIFERS:**

Medium and Large 1

300-400 lbs.	161.00-182.50
400-500 lbs.	156.00-184.50
500-600 lbs.	145.00-166.50
600-700 lbs.	148.00-157.50
700-800 lbs.	153.60-160.25
67 hd 827 lbs.	152.50

**SLAUGHTER BULLS:** Yield  
Grade 1-2 1410-2285 lbs. 76.00-91.00; low dressing couple 62.00-79.00

**SLAUGHTER COWS:** Breaking and Boning (75-85% lean) 45.00-66.00; high dressing 53.50-70.00; low dressing 38.50-55.50. Lean (85-90%) 41.00-55.00

**COW & CALF PAIRS:** Medium and Large 1 2-8 yrs 1150-1450 lbs with 150-300 lb calves 1700.00-2200.00 per pair

**BRED COWS:** Medium and Large 1-2 5-8 yrs 1083-1350 lbs 2nd stage 1050.00-1200.00 per head

**SOUTHEAST MISSOURI WEEKLY SUMMARY**

(Jackson and Farmington)

Receipts: 280 Week ago: 2312 Year ago: 317

Compared to last week, steers and heifers sold 1.00-4.00 lower on a very light test. Slaughter cows steady. Slaughter bulls not well tested.

**FEEDER STEERS:**

Medium and Large 1

Few 300-350 lbs.	169.00-174.00
400-500 lbs.	152.50-171.00
Few 500-550 lbs.	136.00-158.00
Pkg 600 lbs.	141.00
Few 700-750 lbs.	129.00-140.00

**FEEDER HEIFERS:**

Medium and Large 1

350-400 lbs.	135.00-150.00
400-500 lbs.	131.00-145.00
500-600 lbs.	131.00-137.00
600-700 lbs.	126.00-139.00
700-750 lbs.	127.00-130.50

**REPLACEMENT COWS:** Medium and Large 2 2-8 yrs 935-1580 lbs 1st to 3rd stage 645.00-960.00 per head

**SLAUGHTER COWS:** Breaking and Boning (75-85% lean) 45.00-53.00; high dressing 53.50-62.00. Lean (85-90% lean) 29.50-44.00

**COW & CALF PAIRS:** Scarce

**SLAUGHTER BULLS:** Yield  
Grade 1-2 1325-1975 lbs few 65.00-74.50

**EAST CENTRAL MISSOURI WEEKLY SUMMARY**

(Cuba, Vienna) 11/22/21

Receipts: 3151 Week ago: 4307 Year ago: 3659

Compared to last week, steers and heifers steady to 3.00 higher, spots 5.00 to 8.00 higher on feeder calves. Slaughter cows steady to 4.00 lower.

**FEEDER STEERS:**

Medium and Large 1

350-400 lbs.	184.00-191.00
400-500 lbs.	174.00-196.00
500-600 lbs.	158.00-186.00
600-700 lbs.	152.00-167.00
700-800 lbs.	146.00-162.75
800-850 lbs.	145.00-150.00

**FEEDER HEIFERS:**

Medium and Large 1

350-400 lbs.	157.00-161.00
400-500 lbs.	148.75-168.00
500-600 lbs.	137.00-151.00
600-700 lbs.	136.00-155.00

**BRED COWS:** Medium and Large 1-2 2-8 yrs 1075-1265 lbs 2nd to 3rd stage 900.00-1125.00 per head

**SLAUGHTER COWS:** Breaking and Boning (70-85% lean) 45.00-58.00; high dressing 56.00-67.50. Lean (85-90%) 39.50-51.50

**COW & CALF PAIRS:** Medium and Large 1-2 2-8 yrs 970-1200 lbs with 150-300 lb calves 1000.00-1600.00 per pair

**SLAUGHTER BULLS:** Yield  
Grade 1-2 835-2130 lbs 75.00-87.50; high dressing ind 93.00; low dressing 40.00-77.00

**MISSOURI WEEKLY DIRECT  
SLAUGHTER CATTLE REPORT 11/26/21**

Weekly Receipts: 240 Week ago: 200 Year ago: 320

Trading this week, light with flat dressed sales 6.00 higher. Grid dressed sales 3.00 higher.

**LIVE STEERS & HEIFERS:**

scarce

**DRESSED STEERS & HEIFERS:**

4 loads Tue flat 213.00

**GRADE AND WEIGHT (Grid):** 2 loads Wed 218.00

**NATIONAL DIRECT DELIVERED FEEDER PIG REPORT**

11/26/21 Receipts: 70,971 Week ago: 114,948 Year Ago: 119,510 Receipts include 53% formulated prices. Early weaned pigs 10-12 lbs. basis: Formula 43.87-59.43, weighted average 50.45. Cash 35.00-60.00, weighted average 54.78. Feeder pigs 40 pounds basis: Cash 62.00-78.00, weighted average 71.59

**NATIONAL DAILY DIRECT PRIOR DAY HOG REPORTS  
FOR 11/29/2021**

**BARROWS AND GILTS (Carcass Basis):** 5682 head  
Base Carcass Price, 54.00-57.00, weighted average 55.23

**SOWS (Live Basis) 11/26/21:** 6510 head

300-500 lbs.	56.00-85.00
Over 500 lbs.	62.00-83.44

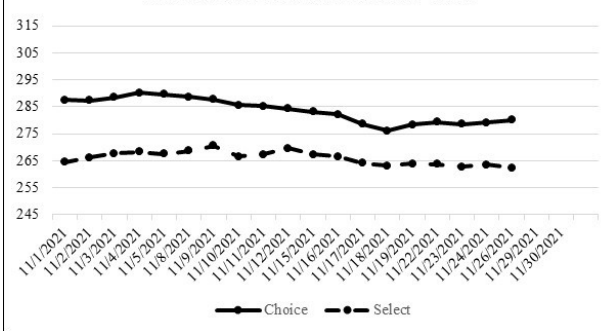
**WHOLESALE FEEDSTUFFS PRICES 11/23/21**  
(DOLLARS PER TON-BULK BASIS)

Area	Soybean Hulls - Bulk	Soybean Meal 48% Solvent	Cottonseed Meal 41% Solvent	Meat Meal	Wheat Middlings
Kansas City	150.00	374.70	347.50	N/A	202.50
St. Louis	N/A	404.50	342.50	N/A	185.00

**NATIONAL BOXED BEEF CUTOUT/BOXED BEEF CUTS**

Date	Choice	Select	Total Loads
11/26	280.01	262.28	50
11/24	279.11	263.47	129
11/23	278.64	262.67	193
11/22	279.25	263.73	124
11/19	278.41	263.83	103
<b>5 Day Simple Average</b>	279.08	263.20	

**Boxed Beef Cuts November 2021**



**Missouri Weekly Sheep/Goat Auction Summary 11/29/21**

Receipts: 2578 Week Ago: 410 Last Year: 1047

(All prices CWT unless noted.) SHEEP: Slaughter lambs woolled and shorn Choice and Prime 1-3 pkg 87 lbs 240.00. Good 1-2 80-120 lbs 200.00-212.50. Hair Choice and Prime 1-3 25-40 lbs 355.00-420.00; 40-50 lbs 370.00-400.00; 50-70 lbs 335.00-390.00; 70-80 lbs 320.00-355.00. Choice 1-3 45-55 lbs 305.00-320.00; 60-70 lbs 310.00-325.00; 70-80 lbs 275.00-325.00; 80-100 lbs 245.00-265.00. Good 1-2 pkg 78 lbs 185.00. Slaughter ewes Utility and Good 1-3 145-180 lbs 100.00-107.50. Hair Good 2-3 90-100 lbs 145.00-225.00; 110-133 lbs 155.00-180.00. Utility and Good 1-3 95-135 lbs 120.00-142.50; 155-175 lbs 110.00-117.50. Cull and Utility 1-2 85-140 lbs 90.00-110.00; 165-205 lbs 85.00-110.00. Hair bucks 1-2 110-190 lbs 125.00-140.00. Replacement ewes hair Small and Medium 1-2 47 hd yearlings 75 lbs 250.00-260.00; 1-2 yrs 16 hd 85 lbs win 305.00; 150 lbs 425.00; 2-4 yrs 90-140 lbs exposed 220.00-240.00; 2-4 yrs 90-140 lbs exposed 250.00-310.00; 4-6 yrs 75-135 lbs 165.00-200.00; 80-95 lbs 210.00-260.00 per head.

GOATS: Feeder kids Selection 1 20-50 lbs 300.00-435.00; replacements 25-40 lbs 400.00-405.00. Selection 2 30-50 lbs 225.00-335.00. Slaughter kids Selection 1 50-70 lbs 320.00-405.00, fancy 440.00-450.00; 70-90 lbs 285.00-350.00. Selection 2 60-70 lbs 275.00-315.00; 80-90 lbs 245.00-302.50. Selection 3 pkg 58 lbs 235.00. Slaughter nannies/does Selection 1-2 80-90 lbs 215.00-245.00; 90-100 lbs 160.00-255.00; 100-150 lbs 195.00-240.00. Slaughter bucks/billies Selection 1-2 115-140 lbs 175.00-275.00; 150-180 lbs 180.00-250.00. Wether kids Selection 1 50-70 lbs 360.00-390.00. Replacement nannies/does Selection 1-2 1-2 yrs pkg 80 lbs bred 260.00' pkg 75 lbs open 290.00; 2-4 yrs pkg 115 lbs bred 380.00; lot 97 lbs exposed 217.50-230.00; lot 105 lbs exposed 275.00 per head. Families Selection 1-2 2-4 yrs 85-95 lbs with baby to 20 lb kids 240.00-420.00 per family.

Explanatory Notes: Stage - Represents estimated lambing/kidding period (Open, Exposed, Bred, Fall = Sep-Nov, Win = Dec-Feb, Spr = Mar-May, Sum=Jun-Aug

**WEEKLY COMMODITY GRAIN FUTURES TRENDS**

Compared to last Friday, Soybeans 0.10 to 0.13 lower, Wheat 0.02 to 0.06 higher, Corn 0.10 to 0.16 higher, KC Wheat 0.20 to 0.31 higher, Soybean Meal 12.60 to 15.60 lower.

**Daily Grain Futures Closes**

	Mon.	Tues.	Wed.	Thu.	Fri.
<b>Soybeans</b>					
Jan	1274 1/4	1273	1266 1/2	Holiday	1252 3/4
Mar	1286 1/4	1284 1/2	1277 1/4		1263
May	1295 1/2	1293 3/4	1286 1/2		1272 1/2
Jul	1301 1/2	1299 1/4	1292 1/4		1278 3/4
Aug	1294 1/4	1292	1286		1274 1/4
<b>Wheat</b>					
Dec	845 3/4	856	836 3/4	Holiday	825 1/2
Mar	857 1/2	867 1/2	850 1/4		840 1/4
May	862 1/2	872 1/4	856 1/2		846 1/2
Jul	848 3/4	858 1/4	843 1/4		834
Sep	844	854	839		830
<b>Corn</b>					
Dec	576 3/4	580 1/2	579 3/4	Holiday	586 3/4
Mar	584 1/4	588 1/4	585 1/2		591 3/4
May	588 3/4	592 3/4	509		595 1/2
Jul	589 1/2	593 1/2	590 1/2		596
Sep	567 1/4	568 1/2	566 3/4		572 1/4
<b>KC Wheat</b>					
Dec	861 3/4	878 3/4	873 1/4	Holiday	865
Mar	866 1/2	884	877		869
May	866 1/4	883 3/4	876		867 1/2
Jul	848 3/4	864	857 1/4		848 3/4
Sep	846 1/4	860 3/4	853		844 1/2
<b>SB Meal</b>					
Dec	370.00	362.20	357.60	Holiday	356.20
Jan	363.70	356.10	350.90		349.40
Mar	361.30	354.10	348.50		346.60
May	361.80	355.80	349.90		347.70
Jul	364.60	359.40	353.20		351.30

**WEEKLY COMMODITY FUTURES TRENDS**

Compared to last Friday, Live Cattle 1.67 to 4.58 higher, Lean Hogs 0.55 to 1.95 lower, Feeder Cattle 2.90 to 6.23 higher.

**Daily Futures Closes**

	Mon.	Tues.	Wed.	Thu.	Fri.
<b>Cattle</b>					
Dec	134.42	135.40	137.90	Holiday	138.10
Feb	138.97	139.42	140.87		141.20
Apr	142.27	142.80	143.90		143.85
Jun	137.00	137.67	138.90		138.82
Aug	136.32	136.70	137.55		137.47
<b>Lean Hogs</b>					
Dec	74.65	74.15	75.42	Holiday	73.20
Feb	83.02	83.27	84.25		81.02
Apr	87.75	87.95	88.05		85.40
May	92.50	92.47	92.40		90.40
Jun	97.75	97.82	97.47		95.62
<b>Fdr Cat</b>					
Jan	161.70	164.37	166.92	Holiday	167.15
Mar	164.10	165.67	167.90		167.97
Apr	166.70	168.02	169.80		169.87
May	168.42	169.60	171.07		171.05
Aug	175.57	176.77	177.85		177.90
<b>Milk</b>					
Nov	17.95	17.94	17.95	Holiday	Holiday
Dec	18.42	18.33	18.32		
Jan	18.99	18.75	18.64		

**WEEKLY LIVESTOCK SLAUGHTER 11/27/21**

	Cattle	Hogs	Sheep
Week to Date:	566,000	2,261,000	31,000
Last Week:	677,000	2,629,000	42,000
Last Year:	564,000	2,340,000	29,000

## Missouri Weekly Cattle Auction Summary 11/29/21

Receipts: 26,790 Week ago: 28,354 Year ago: 24,300

Compared to last week, yearling steers and heifers sold 3.00 to 5.00 higher and steer calves sold 5.00 to 10.00 higher. Although markets are undoubtedly stronger, it should be noted that much of the gain last week had to be contributed to supply and quality of the offerings. Nearly half of the sales in the state were closed or had very light offerings due to the holiday week. Several of the sales that swung gates this week had a very heavy supplies, holding pre-vac type of sales. Near 150 full load lots were sold around the state of high quality, cattle with all the desired paperwork and health programs to accompany them. Needless to say demand was very good, as reflected by some of the prices. On weeks like this, one could pick out load after load of impressive prices to quote but a couple that almost create sticker shock include a short load of 543 lbs. steers sold on Friday at Green City Livestock Market for \$202.25. Several loads of 800-900 lb. steers sold in the mid to upper 160's with one of the top being a load of 851 lb. steers on Tuesday at Unionville Livestock Market which climbed to 170.60 before the hammer dropped. Feedlot trade this week was stronger as well, short bought packers have been caught on the short end of the stick and feedlot managers have gained quite a bit of ground over the last month after being suck in the 120.00-125.00 range most of the summer. As of Friday afternoons report, just over 108K head of negotiated sales were reported, with some of stronger prices reported Friday after everyone had slept off their turkey dinner. Live sales were reported from 138.00 to mostly 140.00 and dressed sales were mostly 217.00 with a few up to 220.00 late Friday. Boxed beef cutouts were slightly mixed for the week with Fridays close for choice at 280.01, up 1.60 and select 262.28, down 1.55 compared to the previous week. The Missouri Stocker Formula consist of 4009 head with a weighted average of 546.89 and a price value of 173.47, up an even 9.00 from last Monday.

### MISSOURI GRAIN WEEKLY TRENDS

Compared to last Friday, Soybeans steady to 0.09 higher, Corn 0.09 to 0.14 higher, Sorghum 0.09 higher.

Area	#1 Soybeans	#2 Soft Wheat	#2 Corn	#2 Grain Sorghum
<u>Kansas City</u>				
Friday**	12.63-12.83	—	5.81-5.96	5.91-6.06
Monday	12.74-12.94	—	5.87-6.02	5.97-6.12
Tuesday	12.73-12.93	—	5.91-6.06	6.01-6.16
Wednesday	12.67-12.87	—	5.90-6.05	6.00-6.15
Thursday	Holiday	—	—	—
Friday	Holiday	—	—	—
<u>St. Louis</u>				
Friday**	12.89-12.91	—	5.91-5.95	5.36-5.41
Monday	13.00-13.02	—	5.97-6.00	5.42-5.47
Tuesday	13.01-13.03	—	6.06	5.46-5.51
Wednesday	12.97-13.00	—	6.05	5.45-5.50
Thursday	Holiday	—	—	—
Friday	Holiday	—	—	—
<u>Central</u>				
Friday**	12.43-12.58	—	5.81	—
Monday	12.54-12.69	—	5.87	—
Tuesday	12.53-12.68	—	5.91	—
Wednesday	12.47-12.62	—	5.90	—
Thursday	Holiday	—	—	—
Friday	Holiday	—	—	—
<u>S.E. MO</u>				
Friday**	12.76-12.83	—	5.69-5.81	—
Monday	12.89-12.94	—	5.74-5.87	—
Tuesday	12.88-12.93	—	5.89-5.91	—
Wednesday	12.81-12.92	—	5.85-5.95	—
Thursday	Holiday	—	—	—
Friday	Holiday	—	—	—

(PRICES PER BUSHEL) \*NEW CROP \*\*PREVIOUS WEEK'S PRICES  
\*Most locations not providing cash wheat bids at this time, due to temporary transportation issues.\*

## Afternoon National Slaughter Cattle Review for 11/26/21

So far for Friday negotiated cash trading has been limited on light demand in Kansas. A few live purchases traded steady with Wednesday at 140.00. In Nebraska and Western Cornbelt negotiated cash trading has been mostly inactive with light demand. Not enough purchases for a market trend. Wednesday in these regions saw live purchases from 138.00-140.00 and dressed purchases, in Nebraska, at 217.00. In the Western Cornbelt last week dressed purchases traded at 210.00. Thus far for Friday in the Texas Panhandle and Colorado negotiated cash trading has been at a standstill. Wednesday in these regions saw live purchases at 140.00.

Negotiated Cash Sales:					
Confirmed:	4247	Week Ago:	6447	Year Ago:	7420
Week to date:	108,069	Week Ago:	114,139	Year Ago:	77,357

Live Basis	Steers	Heifers
Over 80% Choice	136.00-140.00, avg 138.18	-
65-80% Choice	140.00	-
35-65% Choice	-	-
0-35% Choice	-	-
Total All Grades	136.00-140.00, avg 138.76	-
Dressed Basis		
Over 80% Choice	218.00	-
65-80% Choice	-	-
35-65% Choice	-	-
0-35% Choice	-	-
Total All Grades	218.00	-

### MISSOURI CROP PROGRESS AND CONDITION 11/22/21

There were 6.2 days suitable for fieldwork for the week ending November 21, 2021. Temperatures last week averaged 46.3 degrees statewide, 2.1 degrees above normal. Precipitation averaged 0.14 inches, 0.76 inches below normal. Topsoil moisture supply was rated 1 percent very short, 6 percent short, 90 percent adequate, and 3 percent surplus. Subsoil moisture supply was rated 1 percent very short, 12 percent short, 86 percent adequate, and 1 percent surplus. Corn harvested for grain was 97 percent complete, compared to the 5-year average of 96 percent. Soybeans harvested was 90 percent complete, even with the 5-year average. Cotton harvested was 94 percent complete, even with the 5-year average. Winter wheat planted was 92 percent, compared to the 5-year average of 90 percent. Winter wheat emerged was 80 percent, compared to the 5-year average of 75 percent. Winter wheat condition was rated 4 percent poor, 33 percent fair, 57 percent good, and 6 percent excellent.

	Week Ending			2016-2020 Average
	11/21/21	11/14/21	11/21/20	
Corn Harvested	97	94	95	96
Soybeans Harvested	90	81	93	90
Cotton harvested	94	86	89	94
Winter wheat planted	92	86	90	90
Winter wheat emerged	80	72	79	75