

Weekly Market Summary

Published by:
Missouri Department of Agriculture
Ag Business Development Division
Market News Program



Chris Chinn, Director
 Jill Wood, Division Director
 Tony Hancock, Editor
<http://www.ams.usda.gov/marketnews.htm>
<http://www.ams.usda.gov/marketnews.htm>

Michael L. Parson, Governor

Volume XLII, Number 17 ♦ P.O. Box 630, Jefferson City, MO 65102 ♦ (573) 751-4211 ♦ Monday, May 02, 2022

MISSOURI WEEKLY FEEDER CATTLE WEIGHTED AVERAGE REPORT

Receipts: 24,468 Week ago: 20,853 Year ago: 21,597

Steers and Heifers Medium and Large 1—Weighted average weights and prices

STEERS: Medium and Large 1

269 lbs. 191.48	471 lbs. 205.29	671 lbs. 172.87	887 lbs. 157.60
330 lbs. 216.98	523 lbs. 196.36	720 lbs. 161.94	905 lbs. 146.08
380 lbs. 218.81	569 lbs. 188.81	774 lbs. 158.65	967 lbs. 145.71
425 lbs. 210.33	622 lbs. 178.61	823 lbs. 152.77	

HEIFERS: Medium and Large 1

324 lbs. 182.66	526 lbs. 165.10	725 lbs. 148.14
372 lbs. 179.41	575 lbs. 164.13	768 lbs. 140.95
428 lbs. 173.35	627 lbs. 161.51	816 lbs. 140.08
471 lbs. 168.56	675 lbs. 158.20	874 lbs. 132.18

Missouri Steer (Heifer) Stocker Formula for 5/02/2022

Monday's Missouri Stocker Formula consists of **5239 (5201)** head with a weighted average weight of **527.82 (521.47)** lbs. and a price value of **187.78 (161.08)**, 0.07 higher (1.22 lower) than last Monday.

This a rolling seven day calculated weighted value which combines all Feeder Steers reported by MDA/USDA Market News Service weighing from 400-649 lbs. in the Medium and Large 1 and Medium and Large 1-2 frame and muscle classifications, including all comment cattle except Brahman X. Heifer values are in parentheses.

SOUTH CENTRAL MISSOURI WEEKLY SUMMARY

(West Plains, Ava)

Receipts: 4622 Week ago: 3401 Year Ago: 4219

Compared to last week, steers and heifers steady to 5.00 higher. Slaughter cows steady to 3.00 lower. Slaughter bulls steady to 2.00 higher.

STEERS:

Medium and Large 1

300-400 lbs.	210.00-229.00
400-500 lbs.	200.00-225.00
500-600 lbs.	185.00-206.00
600-700 lbs.	172.00-187.00
700-800 lbs.	160.00-171.00
Pkg 808 lbs.	145.00

Holsteins

Large 3

400-450 lbs.	105.00-116.00
Pkg 508 lbs.	110.00

BRED COWS: Medium and Large 1-2 2-8 yrs 965-1322 lbs 2nd to 3rd stage 1025.00-1275.00 per head. Medium and Large 2 2-8 yrs 875-1102 lbs 1st to 3rd stage 550.00-950.00 per head.

BRED HEIFERS: Medium and Large 1-2 820-935 lbs 1st to 3rd stage 775.00-875.00 per head

HEIFERS:

Medium and Large 1

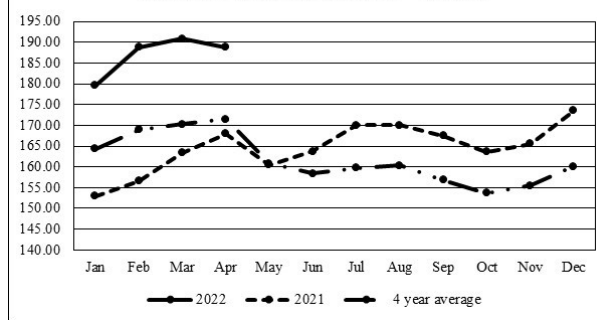
300-400 lbs.	167.50-185.00
400-500 lbs.	157.00-179.00
500-600 lbs.	155.00-168.00
600-700 lbs.	146.00-157.00
700-750 lbs.	141.00-145.00

SLAUGHTER COWS: Breaking and Boning (70-85% lean) 70.00-85.00, high dressing 80.00-89.00; low dressing 65.00-77.00. Lean (85-90%) 61.00-76.00

SLAUGHTER BULLS: Yield Grade 1-2 1210-2260 lbs. 96.00-114.00; high dressing 106.50-136.00; low dressing 71.00-97.00

COW & CALF PAIRS: Medium and Large 1-2 2-8 yrs 1131-1275 lbs with 150-300 lb calves 1350.00-1425.00 per pair. Medium and Large 2 2-8 yrs 1025-1175 lbs with 150-300 lb calves 1225.00-1300.00 per pair

Missouri Stocker Formula - Steers



*Graph is updated the first Monday of each month.

SOUTHWEST MISSOURI WEEKLY SUMMARY

(Joplin and Springfield)

Receipts: 7885 Week Ago: 7037 Year ago: 7720

Compared to last week, steers steady to 5.00 higher, heifers uneven from 2.00 lower to 4.00 higher. Slaughter cows steady to 4.00 lower. Slaughter bulls early week mostly steady to firm, late week steady to 2.00 lower.

STEERS:

Medium and Large 1

300-400 lbs.	215.00-232.00
400-500 lbs.	195.00-224.00
500-600 lbs.	174.00-209.00
600-700 lbs.	160.00-189.50
700-800 lbs.	146.00-167.00
800-850 lbs.	145.00-160.00
900-1000 lbs.	144.50-146.50

HOLSTEINS:

Large 3

300-400 lbs.	100.00-122.00
400-500 lbs.	98.00-137.00
500-600 lbs.	115.00-118.00
600-700 lbs.	109.00-110.50
22 hd 768 lbs.	115.50
800-900 lbs.	90.00-111.50
1000-1100 lbs.	87.00-112.25

BRED COWS: Medium and Large 1 few 2-8 yrs 1160-1370 lbs 2nd to 3rd stage 1250.00-1275.00 per head. Medium and Large 1-2 2-8 yrs 850-1340 lbs 2nd to 3rd stage 850.00-1200.00, 1st stage 860.00-1025.00; over 8 yrs 1055-1105 lbs 2nd to 3rd stage 750.00-935.00 per head

HEIFERS:

Medium and Large 1

300-400 lbs.	173.00-200.00
400-500 lbs.	165.00-183.00
500-600 lbs.	156.75-174.00
600-700 lbs.	143.00-166.00
700-800 lbs.	135.75-155.00
800-900 lbs.	132.50-143.50

SLAUGHTER COWS:

Breaking and Boning (70-85% lean) 74.00-85.50, high dressing 78.50-93.00; low dressing 63.00-77.00. Lean (85-90%) 62.00-78.00

SLAUGHTER BULLS: Yield Grade 1-2 1210-2540 lbs. 97.00-111.00; high dressing 111.00-126.00; low dressing 79.00-97.00

COW & CALF PAIRS: Medium and Large 1-2 2-8 yrs 950-1245 lbs with baby to 300 lb calves 1000.00-1625.00 per pair

The Weekly Market Summary, as well as historical summaries, are available on our website <https://agmarketnews.mo.gov/summaries>
 Market News Hotline: 1-573-522-9244

WEST CENTRAL MISSOURI WEEKLY SUMMARY

(Kingsville, Windsor, Butler)

Receipts: 5982 Week ago: 5157 Year ago: 4468
Compared to last week, steers and heifers steady to 5.00 higher. Slaughter cows steady to 5.00 lower.

FEEDER STEERS:

Medium and Large 1

400-500 lbs. 189.00-228.00
500-600 lbs. 172.25-206.00
600-700 lbs. 161.00-187.00
700-800 lbs. 154.50-161.00
850-900 lbs. 155.85-159.10
Load 969 lbs. 146.35

FEEDER HEIFERS:

Medium and Large 1

400-500 lbs. 165.00-186.00
500-600 lbs. 154.00-189.00
600-700 lbs. 154.25-176.00
700-800 lbs. 146.50-152.00
800-900 lbs. 133.00-147.50

SLAUGHTER BULLS: Yield Grade 1-2 1110-2185 lbs. 93.00-108.00; high dressing 107.00-122.00; low dressing 78.00-94.50

SLAUGHTER COWS: Breaking and Boning (70-85% lean) 70.50-86.50, high dressing 77.50-92.50; low dressing 60.00-75.50 Lean (85-90%) 60.00-73.00

BRED COWS: Medium and Large 1-2 5-8 yrs 1233-1247 lbs 1st to 3rd stage 1025.00 per head

COW & CALF PAIRS: Medium and Large 1-2 5-8 yrs 1200-1250 lbs with 150-300 lb calves 1325.00-1575.00 per pair

NORTHEAST MISSOURI WEEKLY SUMMARY

(Bowling Green, Kingdom City, Palmyra)

Receipts: 5278 Week ago: 2714 Year ago: 2984
Compared to last week, steers 400-500 lbs firm to 5.00 higher, over 500 lbs steady to firm. Heifers steady. Slaughter cows steady to 2.00 lower.

FEEDER STEERS:

Medium and Large 1

400-500 lbs. 191.00-219.00
500-600 lbs. 184.00-204.00
600-700 lbs. 161.00-189.00
700-800 lbs. 148.00-169.50

FEEDER HEIFERS:

Medium and Large 1

400-500 lbs. 166.00-178.00
500-600 lbs. 156.00-171.00
27 hd 686 lbs. 149.85
700-800 lbs. 147.50-149.50
Pkg 851 lbs. 134.50

SLAUGHTER BULLS: Yield Grade 1-2 1300-2740 lbs. 98.00-111.00; high dressing 110.00-122.50; low dressing 87.00-95.00

SLAUGHTER COWS: Breaking and Boning, (70-85% lean) 73.00-84.00; high dressing 82.00-91.00; low dressing 63.00-76.50. Lean (85-90%) 64.00-74.50

SLAUGHTER STEERS: Choice and Prime 2-3 148.00-151.00. Choice 2-3 144.00-149.50. Select and Choice 1-3 141.50.

BRED COWS: Scarce

SLAUGHTER HEIFERS: Choice and Prime 2-3 148.50-149.00. Choice 2-3 143.00-147.00. Select and Choice 1-3 142.00-142.50

NORTH CENTRAL MISSOURI WEEKLY SUMMARY

(Macon, Unionville, Green City, New Cambria)

Receipts: 2789 Week ago: 4247 Year ago: 2374
Compared to last week, steers and heifers steady to 5.00 lower. Slaughter cows steady to 2.00 higher.

FEEDER STEERS:

Medium and Large 1

400-500 lbs. 198.00-219.00
500-600 lbs. 185.50-204.50
600-700 lbs. 167.50-186.00
700-800 lbs. 149.75-164.50

FEEDER HEIFERS:

Medium and Large 1

400-500 lbs. 166.00-185.00
500-600 lbs. 159.00-167.50
600-700 lbs. 159.10-165.00
Pkg 720 lbs. 155.00

SLAUGHTER BULLS: Yield Grade 1-2 1370-1960 lbs couple 106.50-110.00; high dressing 113.00-117.00; couple low dressing 89.00-94.00

SLAUGHTER COWS: Breaking and Boning, (70-85% lean) 68.50-85.50; high dressing 81.50-91.50; low dressing 61.00-73.50. Lean (85-90%) 61.00-73.50

BRED COWS: Scarce

COW & CALF PAIRS: Scarce

SOUTHEAST MISSOURI WEEKLY SUMMARY

(Jackson and Farmington)

Receipts: 1455 Week ago: 2193 Year ago: 1233
Compared to last week, steers and heifers uneven from 10.00 lower to 5.00 higher. Slaughter cows and bulls steady to 2.00 lower.

FEEDER STEERS:

Medium and Large 1

300-400 lbs. 182.00-197.00
400-500 lbs. 171.00-200.00
500-600 lbs. 164.00-185.00
600-700 lbs. 155.00-179.00
700-800 lbs. 140.00-158.00

FEEDER HEIFERS:

Medium and Large 1

300-400 lbs. 150.00-175.00
400-500 lbs. 147.00-173.00
500-600 lbs. 136.00-160.00
600-700 lbs. 130.00-162.00
700-800 lbs. 142.00

SLAUGHTER BULLS: Yield Grade 1-2 1115-2455 lbs. 90.00-101.00, high dressing 106.00-120.00

SLAUGHTER COWS: Breaking and Boning (75-85% lean) 69.00-82.00; high dressing 82.00-90.00. Lean (85-90% lean) 50.00-69.00

BRED COWS: Medium and Large 2 2-8 yrs 1000-1365 lbs 2nd to 3rd stage 650.00-1175.00 per head

COW & CALF PAIRS: Medium and Large 2 2-8 yrs 1000-1300 lbs with baby to 300 lb calves 900.00-1260.00 per pair

EAST CENTRAL MISSOURI WEEKLY SUMMARY

(Cuba, Vienna)

Receipts: 2200 Week ago: 1970 Year ago: 2206
Compared to last week, steers steady to 5.00 higher and heifers under 550 lbs steady to 5.00 lower, over 550 lbs steady to 3.00 higher. Slaughter cows 2.00 to 5.00 lower.

FEEDER STEERS:

Medium and Large 1

300-400 lbs. 209.00-230.00
400-500 lbs. 185.00-223.00
500-600 lbs. 180.00-210.00
600-700 lbs. 169.50-188.50
700-800 lbs. 149.75-163.50

FEEDER HEIFERS:

Medium and Large 1

300-400 lbs. 175.00-187.50
400-500 lbs. 160.00-182.50
500-600 lbs. 146.00-164.00
600-700 lbs. 147.00-151.00
700-800 lbs. 140.00-152.00

SLAUGHTER BULLS: Yield Grade 1-2 1240-2130 lbs. 92.00-114.50, low dressing 61.00-105.00

SLAUGHTER COWS: Breaking and Boning (70-85% lean) 75.00-83.00; high dressing 82.00-89.00. Lean (85-90%) 60.00-74.00

BRED COWS: Medium and Large 1-2 2-8 yrs 945-1287 lbs 1st to 3rd stage 920.00-1200.00 per head

COW & CALF PAIRS: Medium and Large 1-2 2-8 yrs 1100 lbs rebred 1st stage 1700.00 per pair

MISSOURI WEEKLY DIRECT SLAUGHTER CATTLE REPORT 04/29/22

Weekly Receipts: 720 Week ago: 560 Year ago: 420
Trading as of Friday morning: light to moderate with flat dressed sales steady and grid dressed sales steady.

LIVE STEERS & HEIFERS:

Scarce

DRESSED STEERS & HEIFERS:

4 loads flat 230.00

GRADE AND WEIGHT (Grid): 14 loads Thu 238.00

NATIONAL DIRECT DELIVERED FEEDER PIG REPORT

04/29/22 Receipts: 80,038 Week ago: 73,276 Year Ago: 81,026
Receipts include 46% formulated prices. Early weaned pigs 10-12 lbs. basis: Formula 39.94-65.10, weighted average 49.79. Cash 35.00-70.50, weighted average 58.24. Feeder pigs 40 pounds basis: Cash 87.00-109.00, weighted average 100.35

NATIONAL DAILY DIRECT PRIOR DAY HOG REPORTS FOR 05/02/22

BARROWS AND GILTS (Carcass Basis): 3695 head
Base Carcass Price, 96.00-109.00, weighted average 97.93

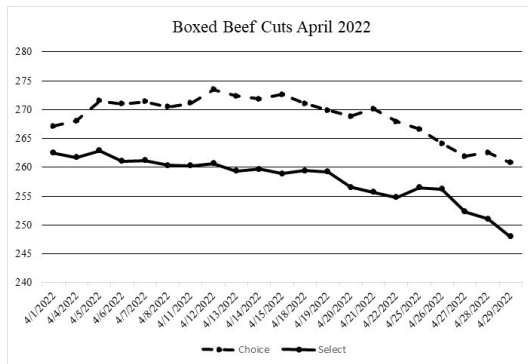
SOWS (Live Basis): 7458 head
300-500 lbs. 66.00-104.25
Over 500 lbs. 76.80-107.25

WHOLESALE FEEDSTUFFS PRICES 04/29/22
(DOLLARS PER TON-BULK BASIS)

Area	Soybean Hulls - Pellets	Soybean Meal 48% Solvent	Corn Gluten Pellets	Wheat Middlings
Kansas City	200.00	448.00	331.00	220.00
St. Louis	N/A	N/A	310.00	203.33

NATIONAL BOXED BEEF CUTOUT/BOXED BEEF CUTS

Date	Choice	Select	Total Loads
04/25	266.60	256.52	67
04/26	264.17	256.23	183
04/27	261.91	252.32	160
04/28	262.60	251.06	168
04/29	260.78	247.97	127
5 Day Simple Average	263.21	252.82	



Missouri Weekly Sheep/Goat Auction Summary 04/29/22

Receipts: 874 Week Ago: 965 Last Year: 926
All prices CWT unless otherwise noted.

SHEEP: Slaughter lambs woolled and shorn Choice and Prime 1-3 pkg 58 lbs 345.00; 70-90 lbs 275.00. Choice 1-3 30-70 lbs 250.00-257.50. Choice and Prime 1-3 hair 30-70 lbs 355.00-400.00. Choice 1-3 hair 50-85 lbs 280.00-330.00. Good 1-2 hair 75-95 lbs 220.00-245.00. Slaughter ewes Utility and Good 1-3 130-140 lbs 90.00-115.00; 250-270 lbs 100.00-102.50. Good 2-3 hair pkg 82 lbs fancy 172.50; pkg 98 lbs 150.00. Utility and Good 1-3 80-145 lbs 112.00-135.00. Cull and Utility 1-2 pkg 100 lbs 95.00. Slaughter bucks 1-2 hair 125-135 lbs 100.00-110.00; pkg 158 lbs 135.00.

GOATS: Feeder kids Selection 1 pkg 28 lbs 410.00; 30-50 lbs 355.00-425.00. Selection 2 20-30 lbs 297.50-307.50; 30-50 lbs 242.00-300.00. Slaughter kids Selection 1 50-80 lbs 350.00-415.00. Selection 2 50-60 lbs 240.00-295.00; 60-70 lbs 242.50-275.00. Slaughter nannies/does Selection 1-2 60-70 lbs 212.00-235.00; 70-80 lbs 185.00-205.00; 80-90 lbs 155.00-255.00, thin 130.00; 90.00-100.00 155.00-206.00; 100-135 lbs 177.50-210.00. Slaughter bucks/billies 100-180 lbs 170.00-220.00. Wethers Selection 2 pkg 155 lbs 250.00. Wether kids Selection 1 pkg 65 lbs 400.00. Selection 2 pkg 93 lbs 260.00.

Explanatory Notes: Stage - Represents estimated lambing/kidding period (Open, Exposed, Bred, Fall = Sep-Nov, Win = Dec-Feb, Spr = Mar-May, Sum=Jun-Aug

WEEKLY COMMODITY GRAIN FUTURES TRENDS

Compared to last week, Soybeans uneven May and Jul 0.04 to 0.08 lower, others 0.02 to 0.09 higher, Wheat 0.11 to 0.22 lower, Corn 0.23 to 0.28 higher, KC Wheat 0.33 to 0.48 lower, Soybean Meal 13.20 to 19.80 lower.

Daily Grain Futures Closes

	Mon.	Tues.	Wed.	Thu.	Fri.
Soybeans					
May	1703 1/2	1705 1/4	1726 1/2	1706 1/2	1708 1/4
Jul	1675 1/4	1671 3/4	1692 3/4	1684 3/4	1684 3/4
Aug	1621 3/4	1619 1/4	1640	1633 1/4	1635 3/4
Sep	1538 3/4	1542	1564 1/2	1559 1/2	1558 1/4
Nov	1494 1/4	1502 3/4	1524 3/4	1521	1514 3/4
Wheat					
May	1062	1083 1/4	1080	1074	1043 3/4
Jul	1072 1/2	1095	1091 1/4	1085 3/4	1055 3/4
Sep	1071 1/4	1092 1/2	1089 3/4	1084 3/4	1058 1/4
Dec	1066 1/4	1087	1086 1/4	1083 1/4	1058 1/4
Mar	1063 1/4	1084 3/4	1084 3/4	1082 1/4	1057 1/2
Corn					
May	800 1/4	803 1/4	815 1/2	816	818 1/4
Jul	798	801 1/2	812 1/4	813 1/2	813 1/2
Sep	751 1/2	760 1/4	766 3/4	769 3/4	768
Dec	734	743 1/2	749 1/2	751 3/4	751 1/4
Mar	737 1/2	747	752 3/4	754 1/2	755
KC Wheat					
May	1145 1/4	1157 3/4	1148 1/4	1136 1/4	1094 1/4
Jul	1153	1164 1/2	1154	1141 1/4	1105 3/4
Sep	1152 1/2	1164	1154 1/2	1142 3/4	1109
Dec	1149 1/2	1160	1152 3/4	1143	1111 1/4
Mar	1145	1154 1/4	1148 3/4	1138 1/4	1108 1/2
SB Meal					
May	452.40	444.80	451.00	440.20	440.50
Jul	445.60	437.00	441.00	430.10	432.30
Aug	436.60	428.30	432.00	422.60	424.80
Sep	425.90	418.50	422.00	413.60	415.20
Oct	414.80	409.00	411.80	405.00	405.30

WEEKLY COMMODITY FUTURES TRENDS

Compared to last week, Live Cattle 0.55 to 5.77 lower, Lean Hogs 4.80 to 124.40 lower, Feeder Cattle 7.40 to 8.63 lower.

Daily Futures Closes

	Mon.	Tues.	Wed.	Thu.	Fri.
Cattle					
Apr	139.10	140.00	138.50	138.50	141.90
Jun	135.42	136.25	135.02	133.90	132.65
Aug	137.32	138.27	137.02	136.35	135.27
Oct	144.07	144.60	143.40	143.05	142.47
Dec	149.82	150.25	149.10	148.90	148.45
Lean Hogs					
May	107.80	105.20	104.17	103.97	100.90
Jun	114.02	111.17	110.35	110.97	106.37
Jul	115.87	113.60	113.15	114.60	110.02
Aug	114.70	112.52	112.37	113.72	109.65
Oct	96.80	95.12	95.82	97.15	93.45
Fdr Cat					
Apr	156.55	156.20	156.20	155.92	—
May	161.30	160.72	157.35	157.95	156.35
Aug	174.50	173.15	168.95	170.40	168.27
Sep	177.60	176.22	172.47	173.40	171.42
Oct	179.85	178.45	175.02	175.77	174.10
Milk					
Apr	24.32	24.31	24.31	24.39	24.39
May	24.68	24.70	24.31	24.60	24.47
Jun	24.82	24.64	24.27	24.62	24.49

WEEKLY LIVESTOCK SLAUGHTER 04/30/22

	Cattle	Hogs	Sheep
Week to Date:	656,000	2,403,000	35,000
Last Week:	665,000	2,374,000	35,000
Last Year:	653,000	2,442,000	47,000

Missouri Weekly Cattle Auction Summary 05/02/22

Receipts: 24,468 Week ago: 20,853 Year ago: 21,597

Compared to last week feeders sold uneven from 2.00 lower to 2.00 higher, with some spots of 5.00 higher on a better offering of 650-750 lb. steers and heifers. The supply is mostly calves with 61 percent of the feeder offering under 600 lbs. this week. This made the few load lots of short yearlings, or maybe more accurately heavy weight calves, attractive to the buyers. Although it's a tough ticket to get right now, there were a few loads and multi load lots of 8 weights that still got very close or just a few cents over that 160.00 mark. Overall, spring remains cold and grass growth has been slow, even though unlike other states, there is no shortage of moisture. Standing water in many areas with cool soil temperatures has kept planting to a minimum so far, although there was some corn put in the ground in areas last week. Boxed beef cutout values lost ground this week with choice closing on Friday at 260.78, down 7.19 and select at 247.97, down 6.80 compared to the previous week. Negotiated feedlot volume saw the largest volume since early June 2020 with over 133k head reported as of Friday afternoon. Live sales were mostly steady from 140.00-147.00 and dressed sales were steady to 2.00 higher at mostly 232.00. The Missouri Stocker Formula consist of 5239 head with a weighted average weight of 527.82 lbs. and a price value of 187.78, 0.07 higher than last week. The steer/heifer spread is currently 26.70.

MISSOURI GRAIN WEEKLY TRENDS

Compared to last week, Soybeans 0.16 lower to 0.20 higher, Wheat 0.15 lower, Corn 0.24 to 0.34 higher, Sorghum 0.24 to 0.25 higher.

Area	#1 Soybeans	#2 Soft Wheat	#2 Corn	#2 Grain Sorghum
Kansas City				
Friday**	16.88-17.08	10.38	8.04-8.19	7.79
Monday	16.75-16.95	10.36	8.13-8.28	7.88
Tuesday	16.72-16.92	10.58	8.17-8.32	7.92
Wednesday	16.93-17.13	10.55	8.24-8.42	8.02
Thursday	16.85-17.05	10.50	8.29-8.44	8.04
Friday	16.85-17.18	10.23	8.29-8.44	8.04
St. Louis				
Friday**	17.61-17.63	10.73	8.17	7.23
Monday	17.49-17.51	10.71	8.24	7.30
Tuesday	17.50-17.54	10.93	8.26-8.27	7.33
Wednesday	17.72-17.74	10.90	8.39-8.47	7.46
Thursday	17.51-17.54	10.85	8.45-8.47	7.46
Friday	17.45-17.53	10.58	8.50-8.51	7.48
Central				
Friday**	16.83-16.88	—	7.84-7.89	—
Monday	16.70-16.75	—	7.93-7.98	—
Tuesday	16.72	—	7.97-8.02	—
Wednesday	16.93	—	8.07-8.12	—
Thursday	16.85	—	8.09-8.14	—
Friday	16.85	—	8.09-8.14	—
S.E. MO				
Friday**	17.20-17.47	—	7.88-8.18	—
Monday	17.08-17.34	—	7.95-8.25	—
Tuesday	17.10-17.35	—	7.98-8.28	—
Wednesday	17.32-17.59	—	8.11-8.41	—
Thursday	17.27-17.37	—	8.26-8.41	—
Friday	17.27-17.38	—	8.29-8.43	—

(PRICES PER BUSHEL) *NEW CROP **PREVIOUS WEEK'S PRICES
Most locations not providing cash wheat bids at this time, due to temporary transportation issues.

Afternoon National Slaughter Cattle Review for 04/29/22

So far for Friday negotiated cash trading in the Southern and Northern Plains has been mostly inactive with very light demand. In the Western Cornbelt negotiated cash trading has been limited with light demand. Not enough purchases for a full market trend in any region. Tuesday was the last reported market in all regions. In the Southern Plains live purchases traded at 140.00. In Nebraska and Colorado live purchases traded from 144.00-146.00, and, in Nebraska dressed purchases traded at 232.00. In the Western Cornbelt live and dressed purchases trading from 145.00-147.00 and at 232.00, respectively.

Negotiated Cash Sales:					
Confirmed:	1,886	Week Ago:	2,668	Year Ago:	2,600
Week to date:	133,182	Week Ago:	108,464	Year Ago:	68,744
Live Basis	Steers	Heifers			
Over 80% Choice	145.00-147.00, avg 146.37	145.00-146.00, avg 145.75			
65-80% Choice	-	-			
35-65% Choice	-	-			
0-35% Choice	-	-			
Total All Grades	145.00-147.00, avg 146.37	145.00-146.00, avg 145.75			
Dressed Basis					
Over 80% Choice	-	-			
65-80% Choice	-	-			
35-65% Choice	-	-			
0-35% Choice	-	-			
Total All Grades	-	-			

MISSOURI WEEKLY HAY SUMMARY 04/28/22

The weather has yet to stabilize and find any kind of normalcy. Record lows were set just a few days ago in several northern areas. Rains every two or three days are preventing much work from getting done, but farmers are taking full advantage of any dry time and are managing to slowly get some spring work done. Pastures and hay fields are in need of sun and some growing degrees as the overall cool weather has prevented much growth. Old crop hay prices have remained mostly steady, even as inputs for this year's crop have climbed exponentially. Demand is light as most feeding is only trying to keep cattle from over grazing early and the cattle aren't overly interested in hay. Supplies are moderate for this time of year most producers have said they did feed a lot of hay this past feeding season and carry over varies. The Missouri Department of Agriculture has a hay directory visit <http://mda.mo.gov/abd/haydirectory/> for listings of hay <http://agebb.missouri.edu/haylst/> (Prices per ton, unless otherwise noted.)

- Alfalfa - Supreme 200.00-250.00, small square 8.00-12.00 per bale
- Alfalfa - Premium 160.00-200.00
- Alfalfa - Good 120.00-160.00, small square 5.00-9.00 per bale
- Alfalfa - Fair 100.00-125.00
- Alfalfa/grass mix - Good/Premium small square 6.00-8.00 per bale
- Mixed grass - Good/Premium 80.00-140.00
- Mixed grass - Fair/Good 60.00-100.00, small square 4.00-6.00 per bale
- Mixed grass - Fair 25.00-55.00 per large round bale
- Wheat straw - 4.00-6.00 per small square bale