

Weekly Market Summary

Published by:
Missouri Department of Agriculture
Ag Business Development Division
Market News Program



Chris Chinn, Director
 Jill Wood, Division Director
 Tony Hancock, Editor
<http://www.ams.usda.gov/marketnews.htm>
<http://www.ams.usda.gov/marketnews.htm>

Michael L. Parson, Governor

Volume XLIII, Number 17 ♦ P.O. Box 630, Jefferson City, MO 65102 ♦ (573) 751-4211 ♦ Monday, May 1, 2023

MISSOURI WEEKLY FEEDER CATTLE WEIGHTED AVERAGE REPORT

Receipts: 28,085 Week ago: 31,489 Year ago: 24,468
 Steers and Heifers Medium and Large 1—Weighted average weights and prices

STEERS: Medium and Large 1

281 lbs. 295.98	470 lbs. 277.09	675 lbs. 226.57	864 lbs. 194.43
327 lbs. 292.91	521 lbs. 261.07	726 lbs. 214.84	910 lbs. 188.86
374 lbs. 285.52	569 lbs. 253.89	776 lbs. 207.56	968 lbs. 186.00
429 lbs. 280.30	624 lbs. 234.18	822 lbs. 198.78	

HEIFERS: Medium and Large 1

277 lbs. 261.12	475 lbs. 234.26	677 lbs. 210.01	858 lbs. 175.83
330 lbs. 250.60	523 lbs. 222.53	733 lbs. 199.49	922 lbs. 164.42
377 lbs. 247.17	570 lbs. 220.62	756 lbs. 193.03	
425 lbs. 239.39	621 lbs. 210.57	810 lbs. 184.59	

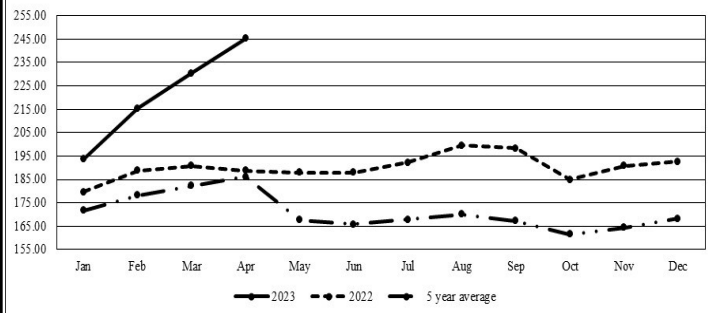
MISSOURI STEER (HEIFER) STOCKER FORMULA 05/01/2023

Monday's Missouri Stocker Formula consists of **5643 (6176)** head with a weighted average weight of **520.89 (514.66)** lbs. and a price value of **254.28 (221.18)**, 1.59 higher (0.91 higher) than last week. This a rolling seven day calculated weighted value which combines all Feeder Steers reported by MDA/USDA Market News Service weighing from 400-649 lbs. in the Medium and Large 1 and Medium and Large 1 -2 frame and muscle classifications, including all comment cattle except Brahman X. Heifer values are in parentheses.

MISSOURI WEEKLY CATTLE AUCTION SUMMARY

Compared to last week, steer and heifer calves steady to 3.00 higher and yearlings mostly steady to firm. However, there were a couple of market reporters that noted a lower trend, mostly due to a lighter supply or fewer comparisons of like cattle. Demand good, supply moderate. Historically, the feeder supply will start to wane by late April or early May, as buyers have usually filled their orders for grass grazers and farmers have turned their calves out on pastures that have greened up. However, the feeder supply has held strong these last several months. Another concern starting to come about is the lack of moisture. The latest drought monitor shows almost twenty-seven percent of the state impacted by some level of dryness or drought. This is a stark contrast to last year when there was only a half of a percent on the drought map and we were concerned with flooding. USDA released April's Cold Storage report last week, showing total pounds of beef in freezers down four percent from a month ago and ten percent lower than a year ago. Boxed beef cuts closed on Friday at 311.44 for Choice and 288.34 for Select, 4.84 higher and 0.54 higher than a week ago, respectively. Negotiated cash trade backed off a little, with live purchases mostly steady to 2.00 lower on a light test at 172.00 to 180.00. There were a few dressed sales reported at 283.00 to 286.00. Monday's Missouri Stocker Formula consists of 5643 head with a weighted average weight of 520.89 lbs and a price value of 254.28, 1.59 higher than a week ago. The steer/heifer price spread is at 33.10.

Missouri Stocker Formula - Steers

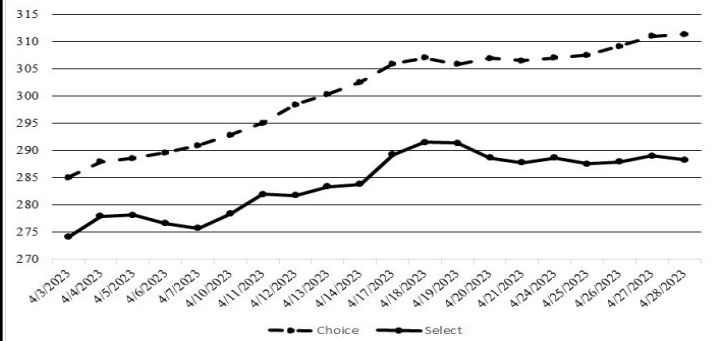


*Graph is updated the first Monday of each month. Axis value ranges may be updated to reflect data points.

NATIONAL BOXED BEEF CUTOUT/BOXED BEEF CUTS

DATE	CHOICE	SELECT	TOTAL LOADS
04/24	307.12	288.70	70
04/25	307.63	287.62	70
04/26	309.24	287.94	97
04/27	311.07	289.09	92
04/28	311.44	288.34	87
5 Day Simple Average	309.30	288.34	

Boxed Beef Cuts April 2023



*Axis value ranges may be updated to reflect data points.

WEEKLY LIVESTOCK SLAUGHTER 04/29/23

	CATTLE	HOGS	SHEEP
Week to Date:	620,000	2,387,000	34,000
Last Week:	622,000	2,454,000	35,000
Last Year:	647,000	2,367,000	39,000

The Weekly Market Summary, as well as historical summaries, are available on our website <https://agmarketnews.mo.gov/summaries>
 Market News Hotline: 1-573-522-9244

SOUTHWEST MISSOURI WEEKLY SUMMARY

(Joplin and Springfield)

Receipts: 11,565 Week ago: 11,106 Year ago: 7,885

Compared to last week, steers and heifers uneven from 2.00 lower to 4.00 higher, spots 10.00 higher on light weight steers early week. Slaughter cows uneven from 3.00 lower to 4.00 higher. Slaughter bulls steady to 4.00 higher.

FEEDER STEERS:
Medium and Large 1

300-400 lbs.	262.50-290.00
400-500 lbs.	258.00-288.00
500-600 lbs.	230.00-269.00
600-700 lbs.	211.00-255.00
700-800 lbs.	204.00-219.00
800-900 lbs.	192.00-204.00
900-1000 lbs.	185.00-191.50

FEEDER HEIFERS:
Medium and Large 1

300-400 lbs.	226.00-260.00
400-500 lbs.	221.00-239.00
500-600 lbs.	200.00-230.00
600-700 lbs.	183.00-220.00
700-800 lbs.	179.00-209.00
800-850 lbs.	180.00-190.00
Pkg 902 lbs.	170.00

FEEDER HOLSTEIN STEERS
Large 3

Pkg 395 lbs.	145.00
400-500 lbs.	140.00-175.50
500-600 lbs.	139.00-150.00
600-700 lbs.	134.00-150.00
700-750 lbs.	143.00-144.00

SLAUGHTER COWS: Breaking and Boning (70-85% lean) 84.00-97.00; high dressing 94.00-109.00; low dressing 80.00-86.50. Lean (85-90%) 72.50-87.50

SLAUGHTER BULLS: Yield Grade 1-2 1110-2515 lbs. 100.00-120.00; high dressing 114.00-135.00; low dressing 90.00-110.00

BRED COWS: Medium and Large 1-2 2-8 yrs 980-1286 lbs 1st to 3rd stage 1100.00-1450.00; >8 yrs 933-1065 lbs 2nd to 3rd stage 900.00-925.00 per head
BRED HEIFERS: Medium and Large 2 2-4 yrs pkg 880 lbs 2nd to 3rd stage 925.00 per head

COW & CALF PAIRS: Medium and Large 1 5 pairs 2-8 yrs 1185 lbs with <150 lb calves 1950.00. Medium and Large 1-2 2-8 yrs 975-1180 lbs some rebred 1st stage with 150 to >300 lb calves 1500.00-1950.00; >8 yrs 950-1050 lbs with 150-300 lb calves 1325.00-1375.00 per pair

SOUTH CENTRAL MISSOURI WEEKLY SUMMARY

(West Plains, Phillipsburg)

Receipts: 4,871 Week ago: 4,480 Year Ago: 4,622

Compared to last week, steers and heifers steady to 5.00 higher. Slaughter cows and bulls steady to 3.00 higher.

FEEDER STEERS:
Medium and Large 1

300-400 lbs.	270.00-298.00
400-500 lbs.	257.00-287.50
500-600 lbs.	235.00-277.00
600-700 lbs.	223.00-249.00
700-750 lbs.	205.00-222.00
850-900 lbs.	187.00-193.85
900-950 lbs.	180.00-183.00

FEEDER HEIFERS:
Medium and Large 1

300-400 lbs.	240.00-245.00
400-500 lbs.	222.50-247.00
500-600 lbs.	202.00-239.00
600-650 lbs.	199.00-207.00
700-800 lbs.	180.00-192.00

FEEDER HOLSTEIN STEERS
Large 3

Scarce Scarce

SLAUGHTER COWS: Breaking and Boning (70-85% lean) 84.00-98.50; high dressing 93.00-104.00; low dressing 76.50-87.00. Lean (85-90%) 71.00-88.00

SLAUGHTER BULLS: Yield Grade 1-2 1255-2330 lbs. 105.00-117.00; high dressing 115.00-136.00; low dressing 84.50-105.00

BRED COWS: Medium and Large 1-2 2-8 yrs 1010-1375 lbs 2nd to 3rd stage 1100.00-1575.00, 1st stage 1050.00; >8 yrs few 1035-1225 lbs 2nd to 3rd stage 1000.00-1075.00 per head

COW & CALF PAIRS: Medium and Large 1-2 2-8 yrs 1005-1180 lbs with 150-300 lb calves 1400.00-1735.00; 2-8 yrs couple 1040 lb calves rebred 1st stage with >300 lb calves 1850.00; >8 yrs couple 1190 lbs with 150-300 lb calves 1685.00 per pair

BRED HEIFERS: Medium and Large 1-2 <2 yrs 700-990 lbs 1st to 3rd stage 800.00-1000.00; <2 yrs 8 head 846 lbs 2nd to 3rd stage 1250.00 per head

WEST CENTRAL MISSOURI WEEKLY SUMMARY

(Kingsville, Windsor, Butler)

Receipts: 6,148 Week ago: 5,970 Year ago: 5,982

Compared to last week, steers and heifers mostly steady. Slaughter cows unevenly steady.

FEEDER STEERS:
Medium and Large 1

400-500 lbs.	257.00-308.00
500-600 lbs.	236.00-273.00
600-700 lbs.	213.00-244.00
700-800 lbs.	202.00-223.00
800-900 lbs.	179.00-210.00
69 hd 919 lbs.	187.75

FEEDER HEIFERS:
Medium and Large 1

400-500 lbs.	215.00-262.00
500-600 lbs.	210.00-240.00
600-700 lbs.	195.00-219.50
700-800 lbs.	187.50-205.75
800-900 lbs.	179.50-188.50
Pkg 949 lbs.	157.00

SLAUGHTER BULLS: Yield Grade 1-2 1265-2365 lbs 108.00-126.50; high dressing 124.00-138.00; low dressing 90.50-106.50

SLAUGHTER COWS: Breaking and Boning (70-85% lean) 84.00-102.50; high dressing 94.50-105.00; low dressing 74.00-85.00. Lean (85-90%) 67.00-84.00

BRED COWS: Medium and Large 1-2 2-8 yrs 970-1425 lbs 1st to 3rd stage 1100.00-1535.00 per head

COW & CALF PAIRS: Scarce

NORTHEAST MISSOURI WEEKLY SUMMARY

(Bowling Green, Kingdom City, Palmyra)

Receipts: 5,489 Week ago: 5,981 Year ago: 5,278

Compared to last week, feeders under 700 lbs steady to 5.00 higher, over 700 lbs higher undertone on limited comparisons. Slaughter cows steady to 3.00 lower.

FEEDER STEERS:
Medium and Large 1

300-400 lbs.	290.00-311.00
400-500 lbs.	268.00-297.00
500-600 lbs.	249.00-297.50
600-700 lbs.	214.00-246.00
700-800 lbs.	200.00-219.00
800-900 lbs.	190.00-204.00
900-950 lbs.	188.50-191.00

FEEDER HEIFERS:
Medium and Large 1

300-400 lbs.	235.00-265.00
400-500 lbs.	230.00-259.00
500-600 lbs.	210.00-256.00
600-700 lbs.	204.50-224.00
700-800 lbs.	181.00-205.00
800-850 lbs.	178.50-181.00

SLAUGHTER BULLS: Yield Grade 1-2 1350-2275 lbs 112.00-122.00; high dressing 123.00-138.00.

SLAUGHTER COWS: Breaking and Boning, (70-85% lean) 88.00-98.00; high dressing 89.00-107.00; low dressing 80.50-90.00. Lean (85-90%) 81.00-90.00

SLAUGHTER STEERS: Choice and Prime 2-4 184.00. Choice 2-3 176.00-181.50. Select and Choice 1-3 170.00-173.50.

SLAUGHTER HEIFERS: Choice 2-3 178.00-182.00. Select and Choice 1-3 170.00-173.50. Select 1-2 169.00-169.50.

BRED COWS: Scarce

COW/CALF PAIRS: Scarce

NORTH CENTRAL MISSOURI WEEKLY SUMMARY

(Macon, Unionville, Green City, New Cambria)

Receipts: 2,241 Week ago: 3,932 Year ago: 2,789

Compared to last week, steers and heifers unevenly steady from 3.00 lower to 3.00 higher, spots up to 10.00 higher on light weight steer calves. Slaughter cows uneven from 2.00 lower to 1.00 higher.

*Some sale barns on a bi-weekly schedule and may not have a sale each week.

FEEDER STEERS:
Medium and Large 1

400-500 lbs.	262.50-290.50
500-600 lbs.	242.50-276.00
600-700 lbs.	217.00-242.50
750-800 lbs.	200.00-210.35

FEEDER HEIFERS:
Medium and Large 1

400-500 lbs.	243.50-251.50
500-600 lbs.	209.50-239.00
600-700 lbs.	201.75-219.50
700-750 lbs.	200.00-204.75
17 hd 850 lbs.	185.10

SLAUGHTER BULLS: Yield Grade 1-2 1615-2300 lbs ind 108.50; high dressing few 122.00-126.00

SLAUGHTER COWS: Breaking and Boning, (70-85% lean) 80.50-98.00; high dressing 97.00-110.00. Lean (85-90%) 74.00-88.00

BRED COWS: Scarce

COW & CALF PAIRS: Scarce

SOUTHEAST MISSOURI WEEKLY SUMMARY

(Jackson and Farmington)

Receipts: 1,420 Week ago: 2,023 Year ago: 1,455
 Compared to last week, steers and heifers steady to 4.00 higher.
 Slaughter cows and bulls steady.

FEEDER STEERS:

Medium and Large 1

300-400 lbs.	240.00-277.00
400-500 lbs.	242.00-270.00
500-600 lbs.	220.00-265.00
600-700 lbs.	190.00-220.00
700-800 lbs.	182.00-209.00
800-900 lbs.	179.00-182.00

FEEDER HEIFERS:

Medium and Large 1

300-400 lbs.	210.00-255.00
400-500 lbs.	200.00-249.00
500-600 lbs.	182.00-222.00
600-700 lbs.	175.00-207.00
700-800 lbs.	175.00-184.00

SLAUGHTER BULLS: Yield
 Grade 1-2 1105-2090 lbs. 83.00-108.00; high dressing 108.00-120.50

SLAUGHTER COWS: Breaking and Boning (75-85% lean) 75.00-89.00; high dressing 88.00-97.00. Lean (85-90% lean) 60.00-75.00

BRED COWS: Medium and Large 2 2-8 yrs 975-1445 lbs 2nd to 3rd stage 1150.00-1600.00 per head

COW & CALF PAIRS: Medium and Large 2 1000-1200 lbs with <150 to 300 lb calves 1150.00-1650.00 per pair

EAST CENTRAL MISSOURI WEEKLY SUMMARY

(Cuba, Vienna)

Receipts: 2,037 Week ago: 3,172 Year ago: 2,200
 Compared to last week, steers and heifers steady to 8.00 higher, with advance on steers under 600 lbs. Slaughter cows steady to 1.00 lower.

FEEDER STEERS:

Medium and Large 1

300-400 lbs.	270.00-303.00
400-500 lbs.	265.50-295.00
500-600 lbs.	254.00-277.00
600-700 lbs.	220.00-241.00

FEEDER HEIFERS:

Medium and Large 1

300-400 lbs.	235.00-259.00
400-500 lbs.	236.00-254.00
500-600 lbs.	220.00-242.50
600-700 lbs.	203.00-220.00
850-900 lbs.	154.00-172.00

SLAUGHTER BULLS: Yield
 Grade 1-2 1235-2185 lbs 108.00-122.00; high dressing 123.00-129.00; low dressing 97.50-110.00

SLAUGHTER COWS: Breaking and Boning, (70-85% lean) 88.00-97.50; high dressing 96.50-107.50; low dressing 81.50-91.50. Lean (85-90%) 79.00-88.00

BRED COWS: Medium and Large 1 2-8 yrs 1180-1390 lbs 2nd stage 1450.00-1585.00 per head

COW & CALF PAIRS: Scarce

NORTHWEST MISSOURI WEEKLY SUMMARY

(Tina) (Feeders and Slaughter cow/bull prices w/e 04/22/23)

Receipts: 1,887 Two Weeks ago: 1,501

Compared to two weeks ago, steers and heifers sharply higher, except 500-600 lbs heifers 1.00 to 2.00 higher. Slaughter cows uneven with breakers and boners 1.00 to 3.00 higher, lean cows 5.00 to 6.00 higher.

FEEDER STEERS:

Medium and Large 1

300-400 lbs.	280.00-300.00
400-500 lbs.	263.00-280.00
500-600 lbs.	257.00-265.50
600-700 lbs.	237.00-242.00
800-900 lbs.	199.75-210.10

FEEDER HEIFERS:

Medium and Large 1

300-400 lbs.	242.00-260.00
400-500 lbs.	227.00-248.00
500-600 lbs.	210.00-220.00
600-700 lbs.	212.00-217.25

SLAUGHTER BULLS: Yield
 Grade 1-2 1155-2125 lbs 112.00-116.00; few high dressing 124.00-129.00; few low dressing 103.50-107.00

SLAUGHTER COWS: Breaking and Boning, (70-85% lean) 86.00-103.50; high dressing 101.00-109.00. Lean (85-90%) 83.00-88.00

BRED COWS: Medium and Large 1 2-4 yrs 1154-1217 lbs 2nd stage 1925.00-2000.00; 2-8 yrs 1212-1287 lbs 2nd stage 1775.00-1950.00 per head. Medium and Large 1-2 2-8 yrs 1220-1365 lbs 2nd to 3rd stage 1550.00-1950.00 per head

COW & CALF PAIRS: Medium and Large 1-2 2-4 yrs 925-1150 lbs with <150 -300 lb calves 2450.00-2550.00; 2-4 yrs 930-1100 lbs rebred 2nd stage with >300 lb calves 2400.00-3000.00; 2-8 yrs 1025-1250 lbs few rebred 2nd stage with <150 lb calves 2300.00-2500.00 per pair

AFTERNOON NATIONAL SLAUGHTER CATTLE REVIEW

Thus far for Friday in the Southern Plains negotiated cash trading has been slow on light to moderate demand. In the Texas Panhandle, compared to last week, live purchases traded 2.00 lower at 173.00. In Kansas, compared to the prior week, live purchases traded steady to 2.00 lower at 173.00. A light test was noted in both regions. In Nebraska negotiated cash trading has been limited on light demand. A few live purchases traded steady at 178.00, when compared to the most recent reported market on Thursday. The last reported dressed purchase market was on Thursday from 283.00-286.00. In the Western Corbelnt negotiated cash trading has been mostly inactive with light demand. Not enough purchases for a market trend. The most recent reported market was on Wednesday with live and dressed purchases at 180.00 and at 285.00, respectively.

Negotiated Cash Sales:					
Confirmed:	14,814	Week Ago:	3,896	Year Ago:	1,886
Week to date:	73,699	Week Ago:	70,294	Year Ago:	133,182

Live Basis	Steers	Heifers
Over 80% Choice	172.00-180.00, avg 173.59	173.00-177.00, avg 173.40
65-80% Choice	172.00-178.00, avg 173.86	173.00-178.00, avg 175.90
35-65% Choice	173.00	173.00
0-35% Choice	-	-
Total All Grades	172.00-180.00, avg 173.69	173.00-178.00, avg 174.52
Dressed Basis		
Over 80% Choice	278.00-280.00, avg 279.36	-
65-80% Choice	-	-
35-65% Choice	-	-
0-35% Choice	-	-
Total All Grades	278.00-280.00, avg 279.36	-

All Beef Type Steers/Heifers	Head	Avg Wt	Price Range	Wtd Avg
Live FOB	14,231	1373.3	172.00-180.00	173.93
Live Del	17	1325	178.00	178.00
Dressed Del	142	891.7	278.00-285.00	281.03
Dressed FOB	-	-	-	-

WEEKLY COMMODITY FUTURES TRENDS

Compared to last week, Live Cattle 0.22 to 1.20 higher except Oct and Dec 0.20 to 0.38 lower, Lean Hogs 2.63 to 5.63 higher, Feeder Cattle May 1.43 lower, others 0.85 to 1.42 higher.

Daily Futures Closes

	Mon.	Tues.	Wed.	Thu.	Fri.
Cattle					
Apr	174.30	174.30	174.52	175.45	175.17
Jun	164.55	164.02	164.57	165.20	165.47
Aug	163.45	162.95	163.40	163.85	163.77
Oct	167.47	166.97	167.42	167.67	167.62
Dec	171.70	171.27	171.65	171.77	171.77
Lean Hogs					
May	77.70	76.87	78.27	78.12	79.65
Jun	87.35	87.05	90.27	90.10	91.70
Jul	90.10	89.85	92.52	92.50	93.67
Aug	91.22	91.02	93.35	93.47	94.67
Oct	81.37	81.50	83.07	83.45	84.37
Fdr Cat					
Apr	202.55	202.07	202.67	202.67	—
May	210.75	209.42	210.27	211.52	210.97
Aug	229.32	229.50	230.95	231.57	230.72
Sep	232.00	231.87	233.72	234.52	233.80
Oct	233.65	233.15	235.22	236.05	235.52
Milk					
Apr	18.63	18.63	18.62	18.62	18.62
May	16.89	16.60	16.61	16.91	16.82
Jun	17.59	17.25	17.18	17.45	17.28

WEEKLY COMMODITY GRAIN FUTURES TRENDS

Compared to last week, Soybean 0.22 to 0.39 lower, Wheat 0.32 to 0.42 lower, Corn 0.18 to 0.30 lower, KC Wheat 0.33 to 0.49 lower. Soybean Meal 5.70 to 11.20 lower.

Daily Grain Futures Closes

	Mon.	Tues.	Wed.	Thu.	Fri.
Soybeans					
May	1465 1/4	1445 1/4	1436	1426 3/4	1444 1/4
Jul	1436	1417 1/2	1414 3/4	1403 3/4	1419 1/4
Aug	1378 1/2	1362 3/4	1363 1/4	1351	1362
Sep	1297 1/2	1287 1/2	1287 1/4	1275 1/4	1284 3/4
Nov	1276 3/4	1266	1266 3/4	1255 1/2	1263 1/2
Wheat					
May	643 1/2	638 3/4	627 1/4	614 3/4	619 3/4
Jul	657	653	642	629 1/4	633 3/4
Sep	669	664 3/4	654 1/4	640 3/4	645
Dec	686 1/4	682	671 3/4	658	662 1/2
Mar	696 3/4	693 1/4	682 1/2	669 1/4	674 1/4
Corn					
May	651 1/4	646 1/2	641 1/2	627	636
Jul	607 1/2	607 3/4	601	581 1/2	585
Sep	550 3/4	551 3/4	546 1/2	530 3/4	528 3/4
Dec	547 1/2	548 1/4	543 1/2	530 3/4	527 3/4
Mar	557	558	553	540 3/4	538 1/4
KC Wheat					
May	833	818 1/4	793 1/2	778 3/4	807 1/4
Jul	817 1/2	803	783 1/4	765 1/4	776 1/4
Sep	811 3/4	799	781	762 3/4	773 3/4
Dec	812	801	784	766 1/4	777
Mar	813 3/4	803	787 1/2	769 1/4	779 1/2
SB Meal					
May	439.50	434.80	426.00	427.90	435.30
Jul	437.40	435.00	427.40	427.40	432.40
Aug	430.30	427.40	421.30	421.50	426.00
Sep	419.70	416.60	411.60	411.60	416.00
Oct	410.60	407.80	403.70	403.60	407.30

MISSOURI GRAIN WEEKLY TRENDS

Compared to last week, Soybeans 0.25 to 0.40 lower, Wheat 0.38 to 0.42 lower, Corn 0.29 to 0.30 lower, Sorghum 0.27 to 0.30 lower.

Area	#1 Soybeans	#2 Soft Wheat	#2 Corn	#2 Grain Sorghum
<u>Kansas City</u>				
Friday**	14.54-14.84	6.78	6.60-6.77	6.65
Monday	14.41-14.71	6.60	6.53-6.70	6.58
Tuesday	14.23-14.53	6.55	6.53-6.70	6.58
Wednesday	14.20-14.40	6.43	6.46-6.63	6.51
Thursday	13.99-14.29	6.31	6.27-6.44	6.32
Friday	14.14-14.44	6.39	6.30-6.47	6.35
<u>St. Louis</u>				
Friday**	15.07-15.12	6.52-6.65	6.93	7.38
Monday	14.88-14.93	6.34-6.47	6.81	7.26
Tuesday	14.65	6.29-6.42	6.74	7.22
Wednesday	14.56-14.57	6.17-6.30	6.70	7.17
Thursday	14.53-14.55	6.05-6.18	6.55	7.02
Friday	14.70-14.72	6.14-6.23	6.64	7.11
<u>Central</u>				
Friday**	14.49-14.54	6.37	6.65-6.70	---
Monday	14.36-14.41	6.19	6.58-6.63	---
Tuesday	14.18-14.23	6.14	6.58-6.63	---
Wednesday	14.15-14.20	6.02	6.51-6.56	---
Thursday	13.99-14.09	5.90	6.32-6.37	---
Friday	14.14-14.24	5.95-6.09	6.35-6.40	---
<u>S.E. MO</u>				
Friday**	14.94-15.04	---	6.79-6.91	---
Monday	14.75-14.85	---	6.61-6.71	---
Tuesday	14.45-14.65	---	6.57-6.67	---
Wednesday	14.46-14.56	---	6.52-6.62	---
Thursday	14.37-14.47	---	6.37-6.47	---
Friday	14.54-14.59	---	6.35-6.56	---

(PRICES PER BUSHEL) *NEW CROP **PREVIOUS WEEK'S PRICES
*Bids calculated using Kansas City, St. Louis, and St. Joseph bids

MONTHLY GRAIN CROP

April 2023 Soybean Bids



April 2023 Wheat Bids



April 2023 Corn Bids



*Axis value ranges may be updated to reflect data points.

**WHOLESALE FEEDSTUFFS PRICES
(DOLLARS PER TON-BULK BASIS)**

Area	Soybean Hulls Pellets	Soybean Meal 46.5-48%	Corn Gluten Pellets 21%	Wheat Middlings
Kansas City	180.00	431.30	276.00	162.50
St. Louis	n/a	n/a	250.00	158.33

COLD STORAGE

Total natural cheese stocks in refrigerated warehouses on March 31, 2023 were up 1 percent from the previous month but down slightly from March 31, 2022. **Butter stocks** were down 1 percent from last month but up 3 percent from a year ago.

Total frozen poultry supplies on March 31, 2023 were up 1 percent from the previous month and up 9 percent from a year ago. Total stocks of chicken were down 1 percent from the previous month but up 9 percent from last year. Total pounds of turkey in freezers were up 5 percent from last month and up 10 percent from March 31, 2022.

Total frozen fruit stocks were down 7 percent from last month but up 20 percent from a year ago. **Total frozen vegetable stocks** were down 7 percent from last month but up 5 percent from a year ago.

Total red meat supplies in freezers were down 1 percent from the previous month and down 1 percent from last year. Total pounds of beef in freezers were down 4 percent from the previous month and down 10 percent from last year. Frozen pork supplies were up 2 percent from the previous month and up 10 percent from last year. Stocks of pork bellies were up 8 percent from last month and up 35 percent from last year.

MISSOURI CROP PROGRESS AND CONDITION 04/24/23

There were 4.7 days suitable for fieldwork during the week ending April 23, 2023. Temperatures last week averaged 56.6 degrees, 1.1 degrees below normal. Precipitation averaged 0.58 inches, 0.47 inches below normal. Topsoil moisture supply rated 4 percent very short, 22 percent short, 70 percent adequate, and 4 percent surplus. Subsoil moisture supply rated 3 percent very short, 20 percent short, 73 percent adequate, and 4 percent surplus. Corn planted was 58 percent complete, compared to the 5-year average of 18 percent. Corn emerged was 11 percent complete, compared to the 5-year average of 2 percent. Soybeans planted was 16 percent complete, compared to the 5-year average of 0. Soybeans emerged was 2 percent complete, compared to the 5-year average of 1 percent. Soybeans emerged was 2 percent, compared to the 5-year average of 0. Cotton planted was 1 percent complete, even with the 5-year average. Rice planted was 63 percent complete, compared to the 5-year average of 24 percent. Rice emerged was 12 percent complete, compared to the 5-year average of 5 percent. Winter wheat headed was 12 percent, compared to the 5-year average of 6 percent. Winter wheat condition rated 0 percent very poor, 4 percent poor, 28 percent fair, 64 percent good, and 4 percent excellent.

	Week Ending			2018-2022 Average
	04/23/23	04/16/23	04/23/22	
Corn Planted	58	30	9	18
Corn Emerged	11	-	-	2
Soybeans Planted	16	5	1	1
Soybeans Emerged	2	-	-	-
Cotton Planted	1	-	-	1
Rice Planted	63	30	1	24
Rice Emerged	12	-	-	5
Winter Wheat Headed	12	3	3	6

MISSOURI WEEKLY HAY SUMMARY 04/27/23

Dry weather has allowed for a tremendous planting pace this spring. As of the latest report near 60 percent of the corn crop is in the ground which is 40 percent ahead of the five year average. Near 20 percent of the bean crop is in, the five year average for beans is 1 percent. Several farmers have actually parked planters due to dryness. It isn't often we have moisture concerns in April but currently 27 percent of the state is showing on the drought monitor which after last year is certainly not what anyone wants to see. Several farmers have made commits that pastures and hay fields consisting of fescue and orchard grass have been slow to take off. The supply of hay is light, demand is light to moderate and prices are steady. The Missouri Department of Agriculture has a hay directory visit <http://mda.mo.gov/abd/haydirectory/> for listings of hay <http://agebb.missouri.edu/haylst/>

Alfalfa - Supreme 250.00-300.00, small square 10.00-15.00 per bale
 Alfalfa - Premium 180.00-250.00
 Alfalfa - Good 150.00-180.00, small square 5.00-9.00 per bale
 Alfalfa - Fair 125.00-150.00
 Alfalfa/grass mix - Good/Premium small square 5.00-9.00 per bale
 Mixed grass - Good/Premium 125.00-175.00
 Mixed grass - Fair/Good 100.00-150.00, small square 5.00-8.00 per bale
 Mixed grass - Fair 50.00-100.00 per large round bale
 Corn stalk - 35.00-55.00 per round bale
 Wheat straw - 4.00-7.00 per small square bale

Please Note: The above volumes (tonnage, acres, and bales) listed on this USDA LPGMN report are for confirmed trades only, it does not include estimated volume (tonnage) for bids or offers to the trade. The current hay directory can be found at: [Hay Directory](#)
 List your hay for sale at: [Hay Listing Online Form](#)
 Explanation of Hay Quality Guidelines: [Hay Quality Designation Guidelines](#)
 Glossary of Terms: [Livestock, Poultry, and Grain Hay Terms](#)

MISSOURI WEEKLY SHEEP/GOAT AUCTION SUMMARY

Receipts: 654 Week Ago: 3,142 Last Year: 874

SHEEP: Feeder lambs Small and Medium 1-2 hair 20-40 lbs 23750-257.50; 40-50 lbs 218.00-240.00.

Slaughter lambs Choice and Prime 1-3 w/s 55-65 lbs 217.50-223.00. Choice and Prime 1-3 hair 50-75 lbs 200.00-237.00; 80-90 lbs 189.00-230.00; pkg 113 lbs 179.00. Choice 1-3 hair 50-90 lbs 200.00-209.00. Good 1-2 hair pkg 63 lbs 117.00. Slaughter ewes 100-190 lbs 68.00-90.00. Cull and Utility 1-2 95-215 lbs 40.00-60.00. Utility and Good 1-3 hair 75-130 lbs 75.00-100.00. Cull and Utility 1-2 hair pkg 83 lbs 70.00; pkg 125 lbs 60.00. Slaughter bucks 1-2 pkg 110 lbs 80.00.

Replacements: Families Small and Medium 1-2 4-6 ys 180 lbs exp with <20 lb lambs 177.50-210.00/family.

GOATS: Feeder kids Selection 1 30-50 lbs 324.00-410.00. Selection 2 20-30 lbs 212.00-280.00; pkg 38 lbs 202.50; 40-50 lbs 294.00-307.50. Selection 3 13 hd 25 lbs 150.00; 20-40 lbs pygmies 100.00-165.00; 40-50 lbs 157.50-187.50, pkg pygmies 100.00.

Slaughter kids Selection 1 50-80 lbs 290.00-297.50. Selection 2 80-95 lbs 260.00-270.00. Slaughter nannies/does Selection 1-2 60-75 lbs 112.00; 85-120 lbs 140.00-162.50. Wethers Selection 1-2 pkg 88 lbs 177.00; pkg 128 lbs 140.00.

Replacement nannies/does Selection 1-2 1-2 yrs 107 lbs exp 222.50. Selection 1-2 <1 yrs 65-70 lbs exp 187.50-210.00/hd; 2-4 yrs 80-100 lbs bred 140.00-185.00/hd. Families Selection 1-2 2-4 yrs 80-90 lbs exp with <20 lb kids 167.50-220.00/family; >6 yrs pygmies 65 lbs exp with <20 lb kids 85.00/family.

Explanatory Notes: Stage - Represents estimated lambing/kidding period (Open, Exp=exposed, Bred, Fall = Sep-Nov, Win = Dec-Feb, Spr = Mar-May, Sum=Jun-Aug; w/s = woolled and shorn; /hd= per head; /fam=per family
 All price CWT unless otherwise noted.

MISSOURI DROUGHT MONITOR

Date	None	D0	D1	D2	D3	D4
04/25/23	73.08	15.99	10.34	0.59	0	0
04/18/23	86.13	12.08	1.58	0.21	0	0
04/26/22	99.50	0.50	0	0	0	0

Reflects percentage of Missouri impacted by drought.
 D0 Abnormally Dry; D1 Moderate Drought; D2 Severe Drought; D3 Extreme Drought; D4 Exceptional Drought

NATIONAL DIRECT DELIVERED FEEDER PIG REPORT

04/28/23 Receipts: 108,340 Week ago: 78,914 Year Ago: 80,038
 Early weaned pigs 5.00/hd lower. Feeder pigs 11.00/hd lower.
 Early weaned pigs 10-12 lbs. basis: Cash 69,480 head 3.00-23.00, weighted average 13.09.
 Formula 25,384 head 18.75-50.35, weighted average 34.43.
 Feeder pigs 40 pounds basis: Cash 13,476 head 36.00-66.00, weighted average 49.45.

NATIONAL DAILY DIRECT PRIOR DAY HOG REPORTS FOR 04/28/23

BARROWS AND GILTS (Carcass Basis): 11,133 head
 Base Carcass Price 62.00-77.00, weighted average 71.84

SOWS (Live Basis): 6,925 head
 300-500 lbs. 13.00-43.00
 Over 500 lbs. 16.00-42.00

MISSOURI WEEKLY DIRECT SLAUGHTER CATTLE REPORT 04/28/23

Weekly Receipts: 640 Week ago: 400 Year ago: 320
 Trade as of Friday morning: trade is light to moderate with flat dressed sales 2.00 to 3.00 lower. Grid dressed sales 2.00 lower.

LIVE STEERS & HEIFERS: No sales reported
DRESSED STEERS & HEIFERS: 9 loads Thu flat 285.00

GRADE AND WEIGHT (Grid): 7 loads Thu 290.00

Click here for the current [National Crop Progress](#)
 Click here for the current [Missouri Crop Progress](#)